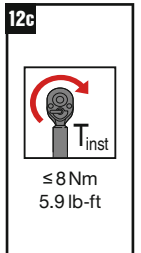
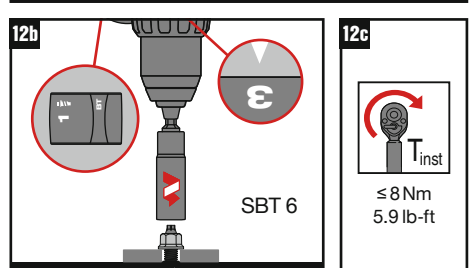
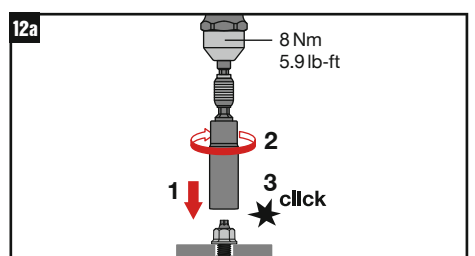
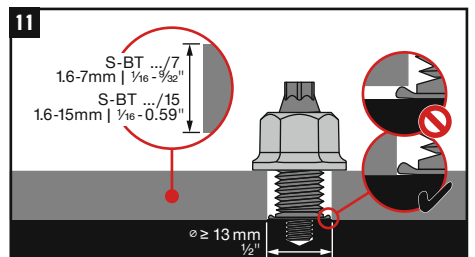
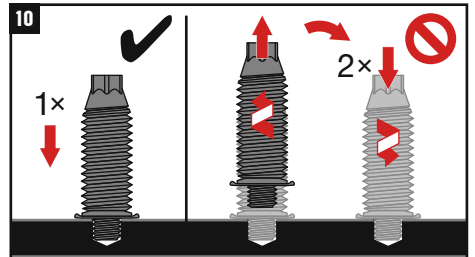
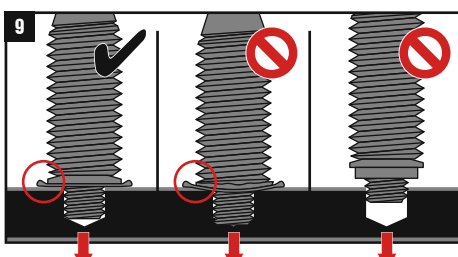
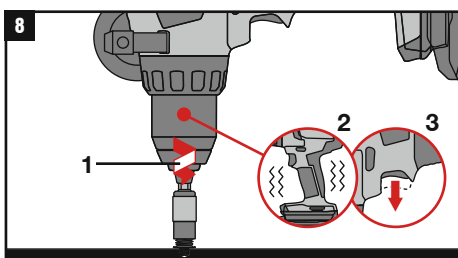
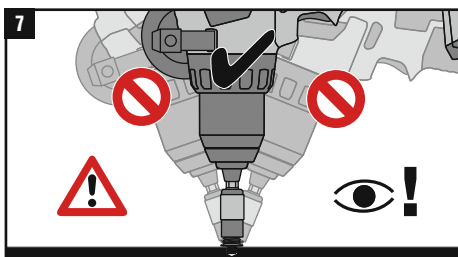
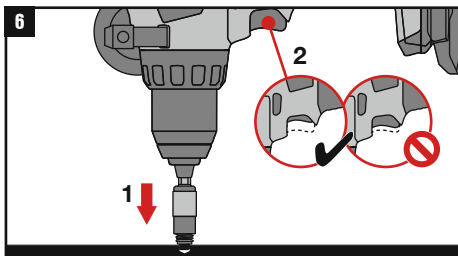
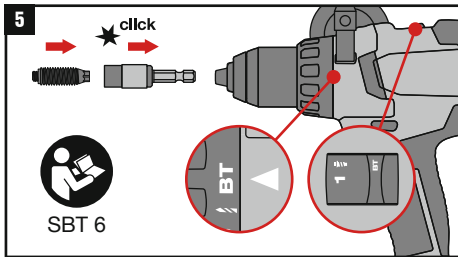
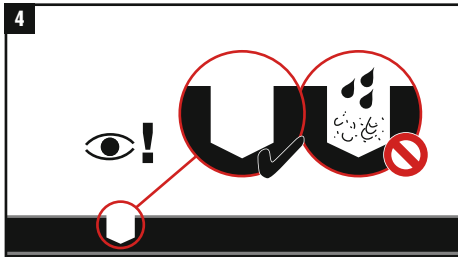
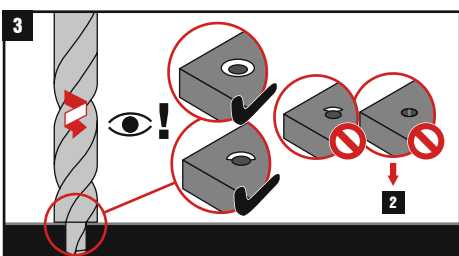
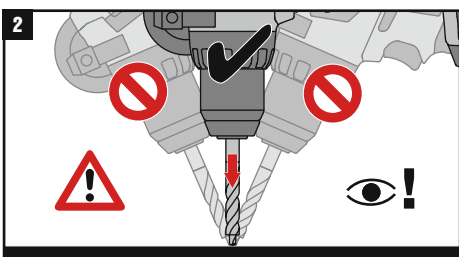
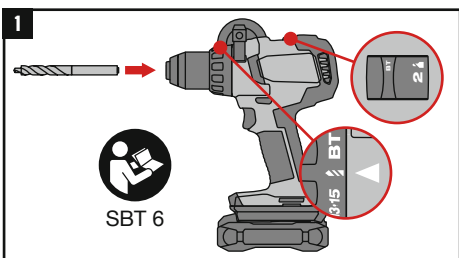


S-BT-MR M8/7 SN 6 HL AL
 S-BT-MR M8/15 SN 6 HL AL
 S-BT-MR M10/15 SN 6 HL AL
 S-BT-MR W10/15 SN 6 HL AL

Hex nut with flange M8-A4
 Hex nut with flange M10-A4
 Hex nut with flange W10-A4

	SBT 6
	TS-BT 5.5-74 AL
	S-SH BT M8/M10/W10
	Torque tool X-BT 1/4" 8 Nm / 5.9 lb-ft
	S-NS 13 C 95/3 1/4" (M8) S-NS 15 C 95/3 1/4" (M10) S-NS 9/16" C 95/3 1/4" (W10)
	S-IC BT



23
Hilti Corporation, Feldkircherstrasse 100, FL-9494 Schaan, Liechtenstein
Hilti-SF-DoP-044
ETA-23/0001
EAD 333037-00-0602
0672-CPR
Threaded studs for connection of materials to structural steel and aluminium members
www.hilti.group