



The following excerpt are pages from the North American Anchor Fastening Technical Guide, 2011.

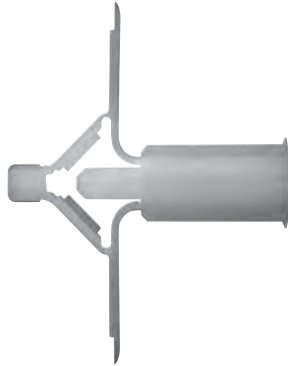
Contact Hilti's team of technical support specialists between the hours of 7:00am – 6:00pm CST for complete details on this product including data development, product specifications, general suitability, installation, corrosion and spacing and edge distance guidelines.

US: 877-749-6337 or HNATechnicalServices@hilti.com

CA: 1-800-363-4458, ext. 6 or CATechnicalServices@hilti.com

3.3.17 HLD Kwik Tog

- 3.3.17.1 Product Description
- 3.3.17.2 Material Specifications
- 3.3.17.3 Technical Data
- 3.3.17.4 Installation Instructions
- 3.3.17.5 Ordering Information



3.3.17.1 Product Description

The Hilti HLD KWIK Tog is a plastic anchor designed to accept #8 or #10 screws for light duty applications in hollow or solid base materials

- Leg braces provide added support
- Ribs on body help prevent anchor from spinning during installation
- Remains mounted in the wall without screw for convenient handling, installation and reuse

Product Features

- Unique one piece design for easy setting
- Three convenient sizes for use in a variety of hollow base materials from 1/4" drywall to block and concrete

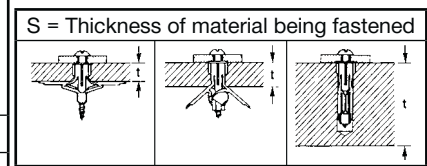
3.3.17.2 Material Specifications

Plastic: polypropylene for use in temperature range from -40°F to 140°F

3.3.17.3 Technical Data

Base Material Thickness (in.)	Drill Bit Dia. (in.)	L		d
		L	d	
HLD KWIK Tog 2 specially designed for 1/2" sheetrock				
5/32" to 1/2"	3/8"	1-1/4" + S	#8 / #10	
17/32" to 19/32"	3/8"	1-1/4" + S	#8 / #10	
greater than 1-3/8"	3/8"	1-9/16" + S	#10 / #12	
HLD KWIK Tog 3 specially designed for 5/8" sheetrock				
5/8" to 3/4"	3/8"	1-1/2" + S	#8 / #10	
3/4" to 7/8"	3/8"	1-1/2" + S	#8 / #10	
greater than 1-5/8"	3/8"	1-13/16" + S	#10 / #12	
HLD KWIK Tog 4				
15/16" to 1-1/8"	3/8"	1-7/8" + S	#8 / #10	
1-1/8" to 1-1/4"	3/8"	1-7/8" + S	#8 / #10	
greater than 2"	11/32"	2-3/16" + S	#10 / #12	

Specification Table

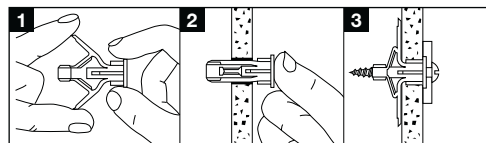


HLD KWIK-Tog Allowable Loads¹

Description	1/2" Drywall Tension lb (N)	5/8" Drywall Tension lb (N)	Hollow Concrete Block Tension lb (N)
HLD 2	20 (89)	25 (111)	40 (178)
HLD 3	-	35 (156)	50 (222)
HLD 4	-	-	70 (311)

¹ Based on using a safety factor of 5.0.

3.3.17.4 Installation Instructions



1. Compress wings together.
2. Insert anchor through drilled hole.
3. Insert and tighten screw through fixture to expand wings.

3.3.17.5 Ordering Information

HLD KWIK-Tog Anchor Program

Description	Bit Dia. (in.)	Hollow Base Matl. Thickness (in.)	Allowable Load in 5/8" Drywall Tension		Recommended Screw Size ¹		Qty Per Bag
			lb (kN)	Tension (0.11)	Hollow Base Matl. #8 or #10	Solid Base Mtl. #10	
HLD KWIK Tog 2 (HLD2)	3/8	3/16 to 5/8	25 (0.11)	-	#8 or #10	#10	150
HLD KWIK Tog 3 (HLD3)	3/8	5/8 to 7/8	35 (0.16)	-	#8 or #10	#10	100
HLD KWIK Tog 4 (HLD4)	3/8	15/16 to 1-1/4	-	-	#8 or #10	#10	100

¹ Screw not included